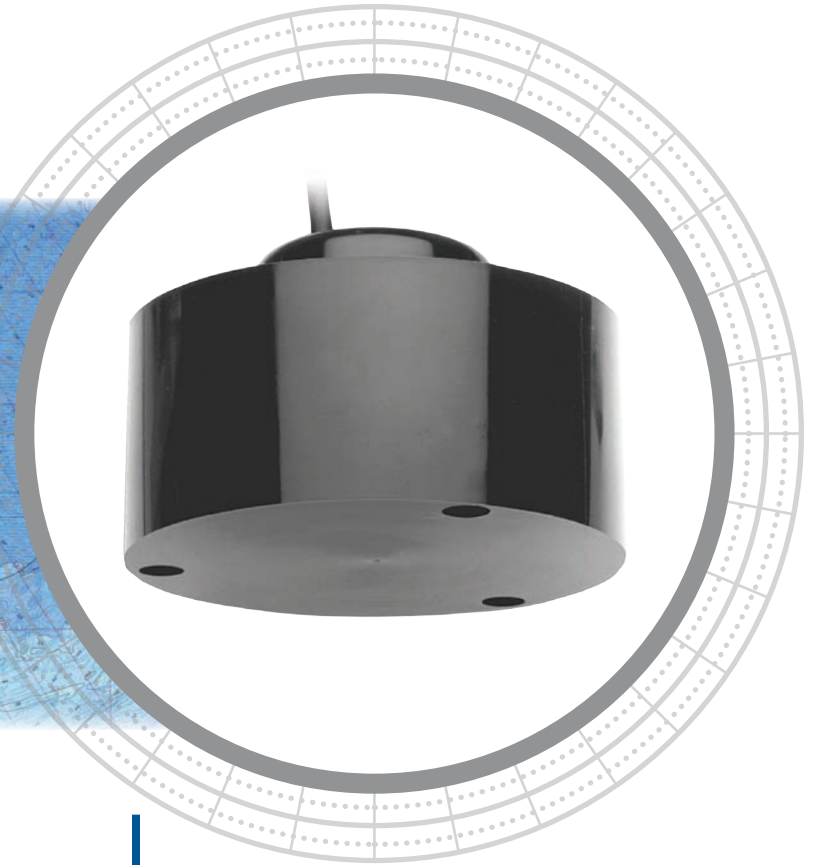
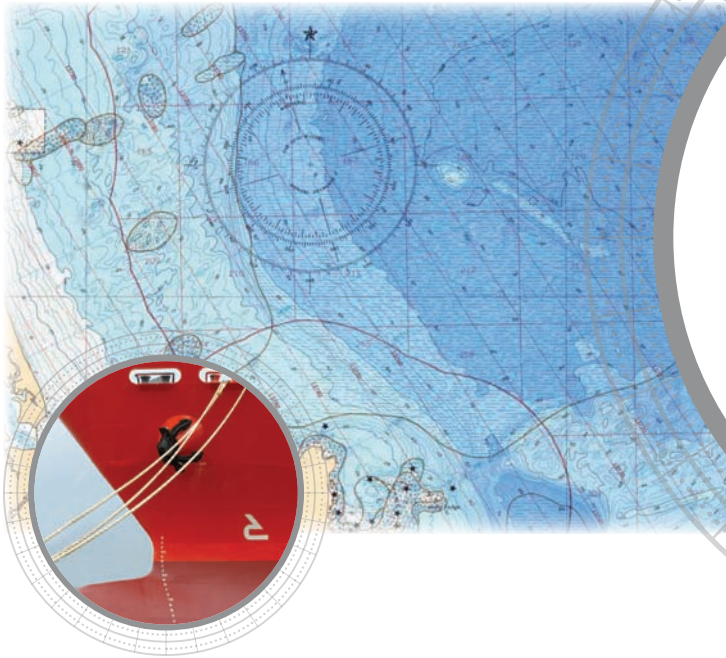


# M192



## Narrow-Beam Sensitivity

The M192 features a ceramic-element array with a narrow beamwidth and exceptional sensitivity to provide excellent bottom detail.

## Options

- Many frequencies available, such as:
  - 15 kHz broadband
  - 24 kHz
  - 28 kHz
  - 30 kHz
  - 33 kHz
  - 38 kHz
  - 33 kHz & 200 kHz broadband
- Impedance to customer's specifications using matching transformer

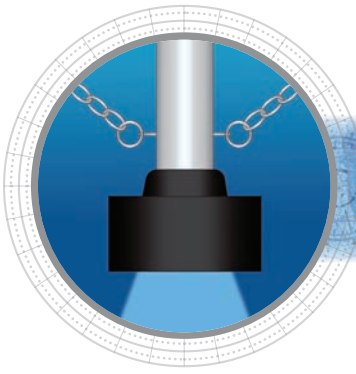
## Tank-Mount

### Applications





- Deep and shallow-water survey
- High seas navigation

### Features

- Low-ringing array provide excellent target resolution
- Seamless, SEALCAST™, urethane housing resists cuts and abrasion and has excellent, impact resistance
- Can be adapted for tank or portable mounting

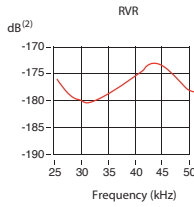
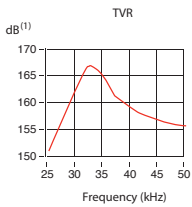


## Technical Information

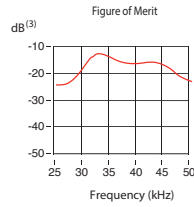
Frequencies	Configuration	Beamwidth (@-3 dB)	RMS Power (kW)	FOM (dB)	Q	Series Impedance (R-jX)
15 kHz-E	 A	50°	1 kW	-24	2	60-j0(Ω)
24 kHz-W	 B	24°	1.5 kW	-11	8	60-j0(Ω)
33 kHz-D	 C	19°	1 kW	-13	7	90-j0(Ω)
38 kHz-B	 D	20°	1 kW	-11	7	60-j0(Ω)

### Technical Data—33 kHz-D

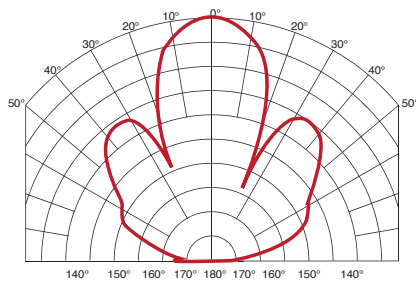
TVR in dB re 1 μPa/Volt at 1 m



RVR in dB re 1 Volt/μPa



### Directivity Pattern—33 kHz-D



## SPECIFICATIONS

### Weight\*\*:

- A—8 kg (17 lb)
- B—8 kg (17 lb)
- C—7.3 kg (16 lb)
- D—7.3 kg (16 lb)

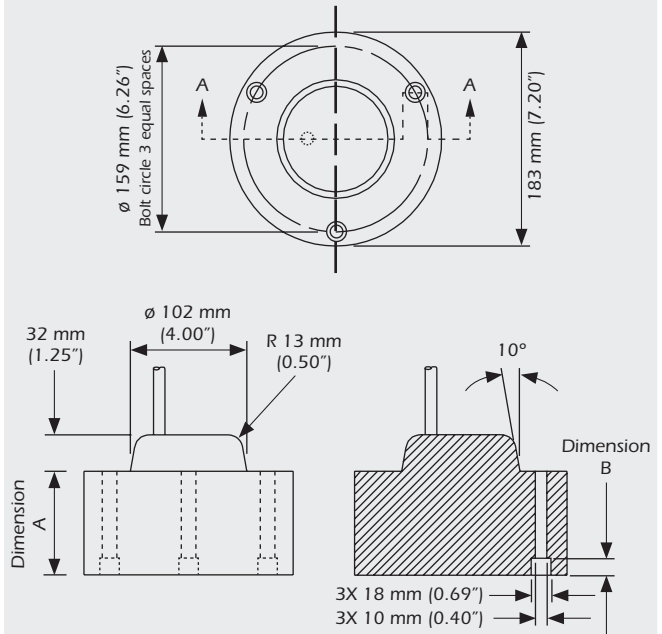
Acoustic Window: Urethane

### Cable Type\*\*:

C-43  
Shielded twisted pair (2-14 AWG) with braided shield, black neoprene jacket, 10 mm (13/32") diameter

\*Weights may vary depending on the cable length and configuration.  
\*\*Typical cable length is 10 m (33') up to 40 m (130').

## DIMENSIONS



Configuration	Dimension A	Dimension B
A; B	110 mm (4.32")	34 mm (1.34")
C; D	90 mm (3.56")	15 mm (0.59")