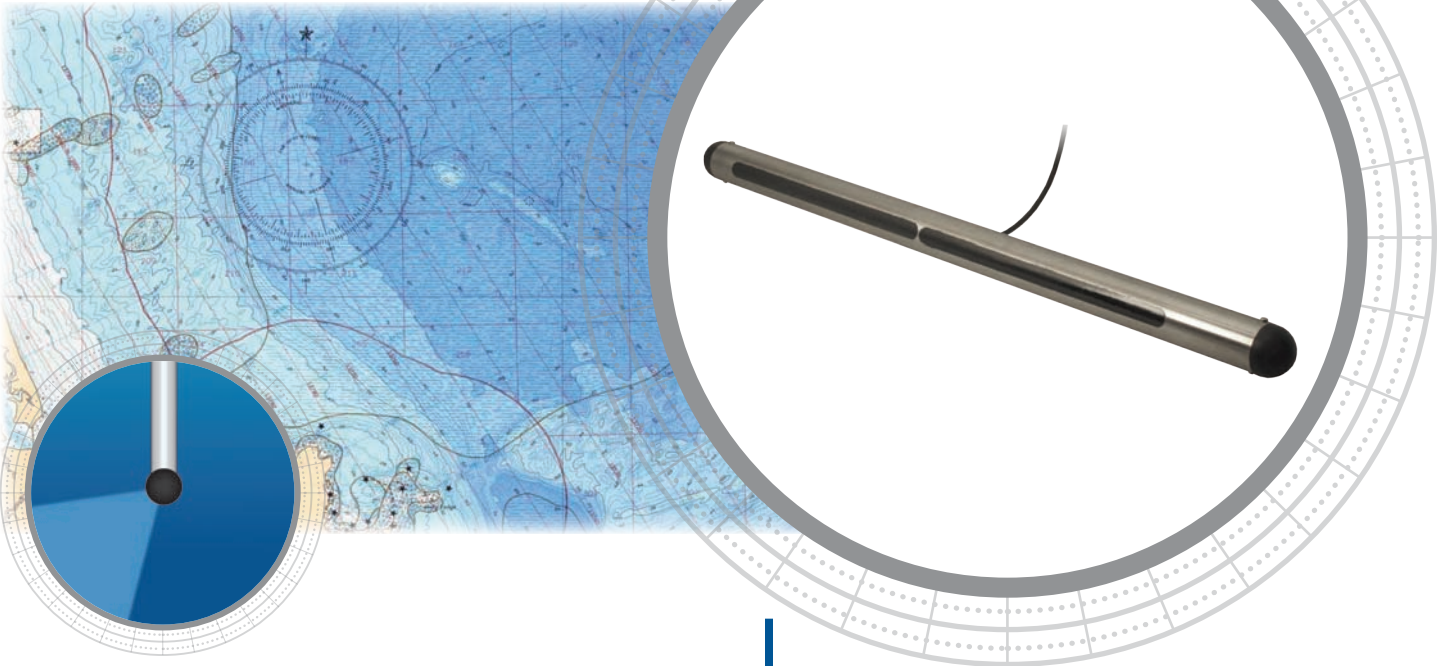


SS82



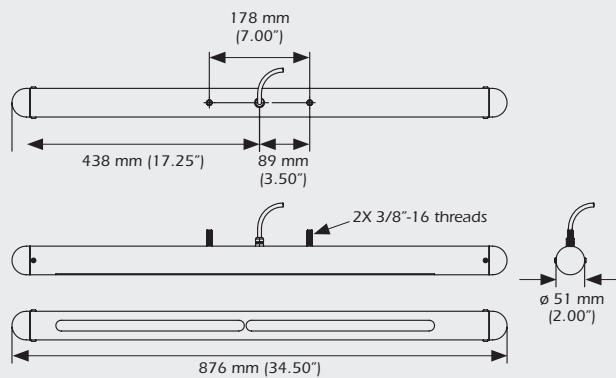
Meeting the Needs of the Oceanographic Science Industry

As the requirements of the oceanographic community become more demanding, Airmar has kept pace. Airmar's family of Side-Scan Sonar Transducers are used by customers for high-resolution bottom mapping.

Options

- Dual-beam option
- Custom configurations available

DIMENSIONS



Large Side Scan

Applications

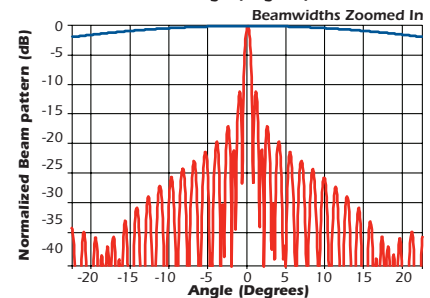
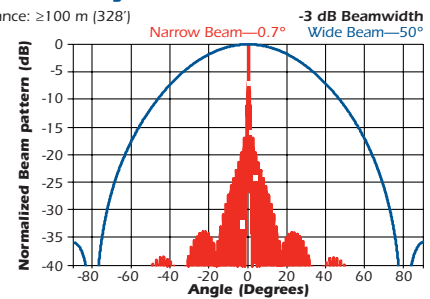
- Survey and detailed bottom mapping

Features

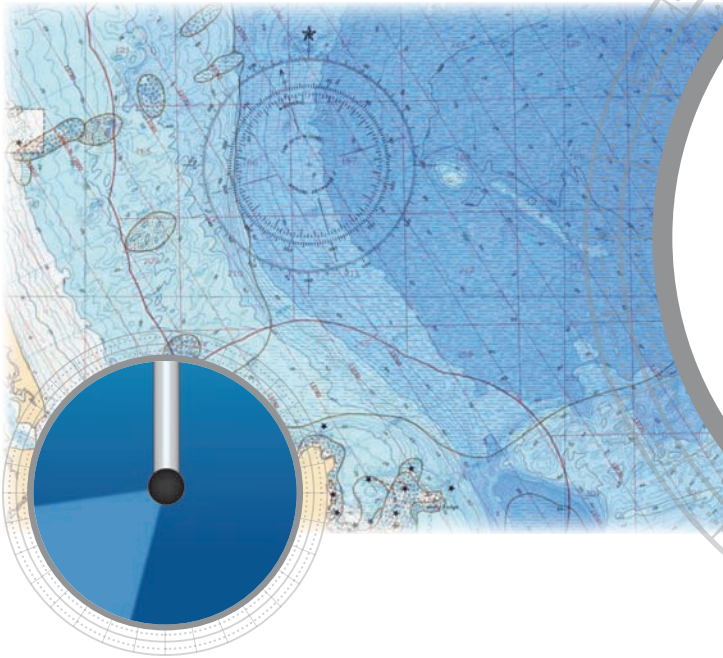
- 200 kHz operating frequency

Directivity Pattern

Farfield Distance: ≥ 100 m (328')



SS134



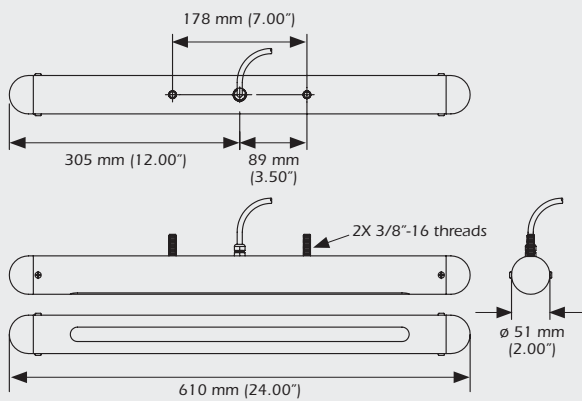
Meeting the Needs of the Oceanographic Science Industry

As the requirements of the oceanographic community become more demanding, Airmar has kept pace. Airmar's family of Side-Scan Sonar Transducers are used by customers for high-resolution bottom mapping.

Options

- 340 kHz
- 500 kHz
- Custom configurations available

DIMENSIONS



Small Side Scan

Applications

- Survey and detailed bottom mapping

Features

- High operating frequencies

Directivity Pattern—340 kHz

Farfield Distance: ≥ 50 m (164')

