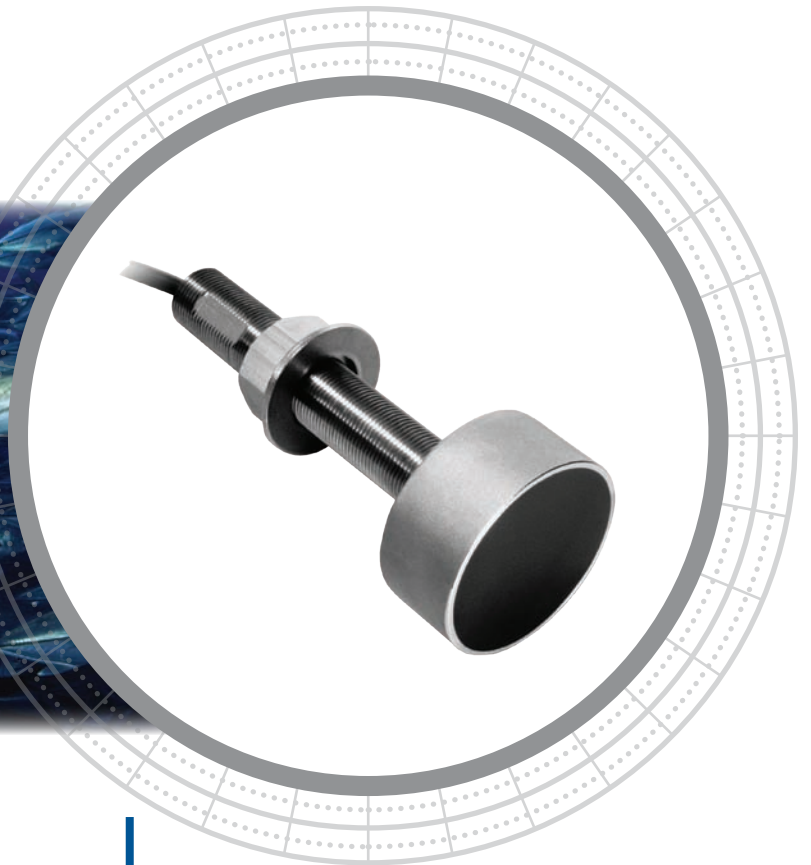
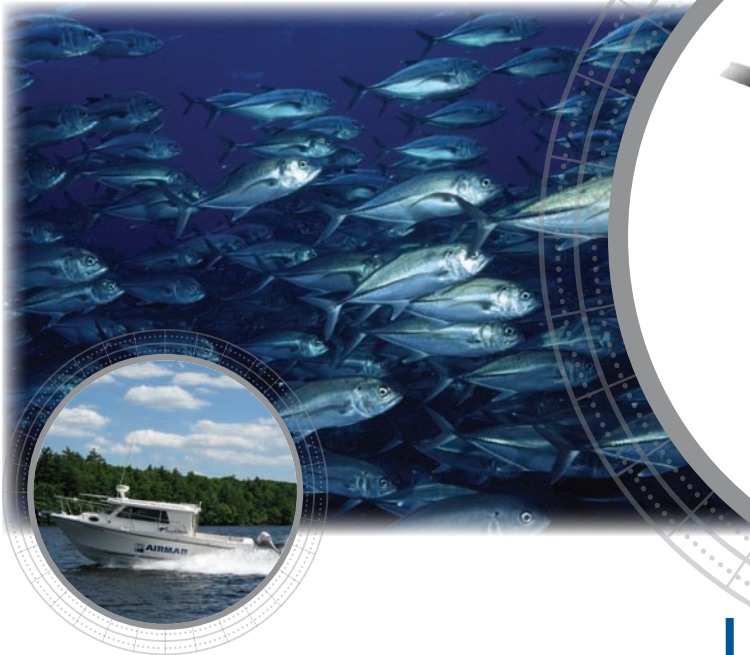


# SS505



## Impact Resistant

The SS505 is a compact, impact resistant, stainless steel stem for use on all hulls. The dual-frequency version provides good target detail in shallow-water at 200 kHz and good deep-water bottom tracking at 50 kHz. The narrow-beam 200 kHz version provides excellent bottom detail. Airmar's High-Performance Fairings are recommended for all installations to obtain the best possible performance.

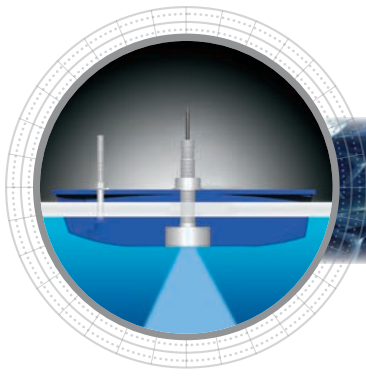
## Thru-Hull Long-Stem 600 W

### Applications

- Planing hull powerboats
- Displacement hull boats

### Features

- Good sensitivity in a compact housing
- Depth and temperature
- High-Performance Fairing reduces drag and directs smooth water over the transducer's face for excellent echosounder performance at all speeds
- Includes kit to isolate the stem from metal hulls, minimizing the possibility of electrolytic corrosion
- Fairing vertically orients sound beams for stronger return echoes resulting in optimal sounder performance
- Airmar's SS505 fairing is easy-to-cut and will not swell or rot
- Optional temperature sensor
- Stainless steel housing only
- Boat Size: 9 m (30') and up



## Technical Information

### 50/200 kHz-A / 200 kHz-HiQ

| Number of Elements and Configuration |         |         |         |
|--------------------------------------|---------|---------|---------|
| Beamwidth (@-3 dB)                   | 45°     | 12°     | 8°      |
| RMS Power (W)                        | 600 W   | 600 W   | 600 W   |
| TVR                                  | 155 dB  | 164 dB  | xxx dB  |
| RVR                                  | -174 dB | -184 dB | -xxx dB |
| FOM*                                 | -31     | -21     | -19     |
| Q                                    | 28      | 31      | 7       |

### MAXIMUM DEPTH RANGE

| 50 kHz                             | 200 kHz                          | 200 kHz-HiQ                      |
|------------------------------------|----------------------------------|----------------------------------|
| 235 m to 353 m<br>(800' to 1,200') | 118 m to 206 m<br>(400' to 700') | 176 m to 235 m<br>(600' to 800') |

### SPECIFICATIONS

**Weight:** 1 kg (2.2 lb)

**Hull Deadrise:** Up to 28° with fairing

**Acoustic Window:** Urethane

**Hole Diameter:** 22 mm (7/8")

### DIMENSIONS

