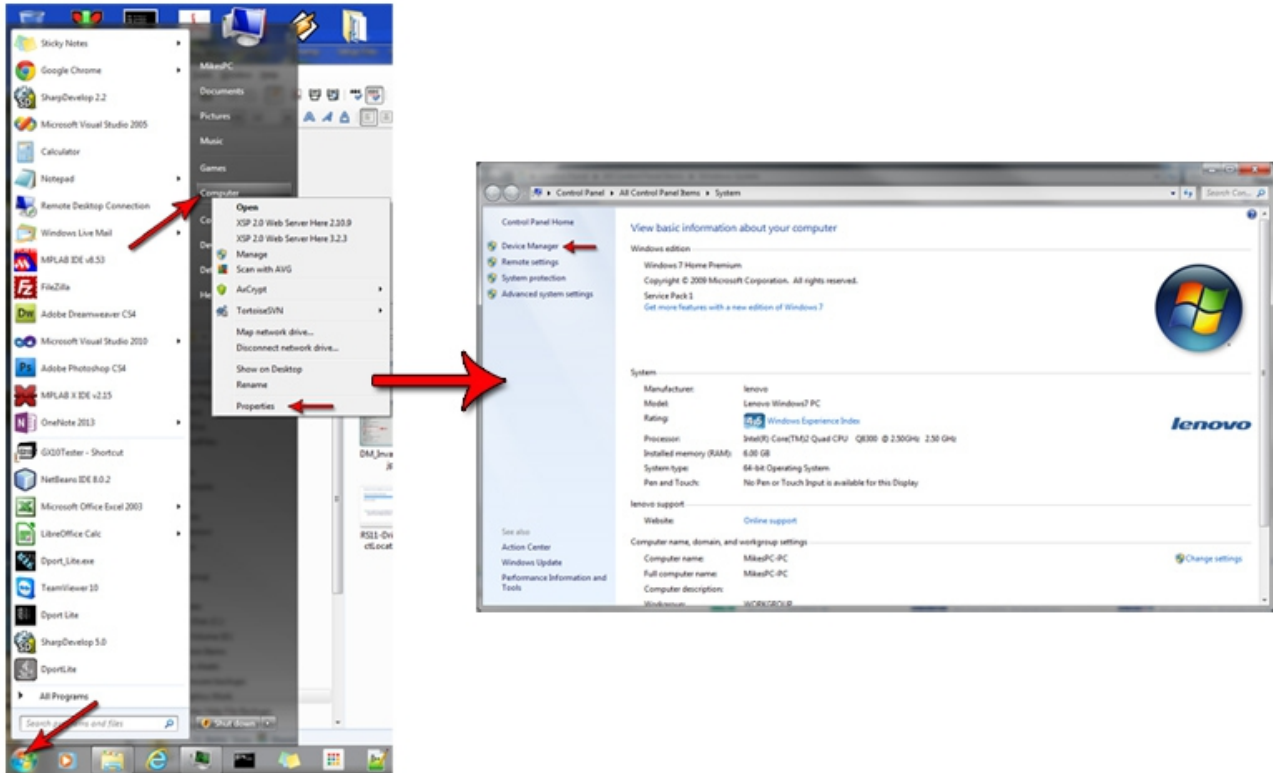


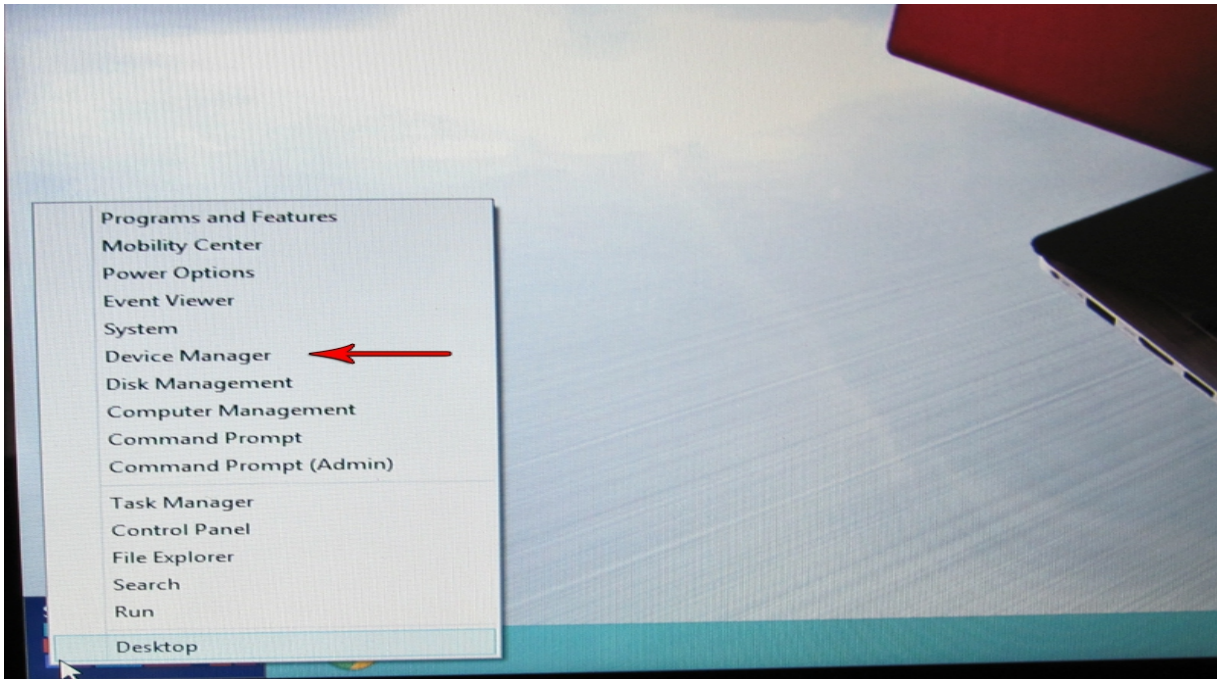
RS11, MD33, and HR12 Driver Fixing tips

Here are some tips to assist you in installing the USB drivers for your RS11, MD33, or HR12 if they do not install correctly through normal channels. This write up uses the RS11 as an example, but the concept is the same.

1. Open your **Device Manger**.

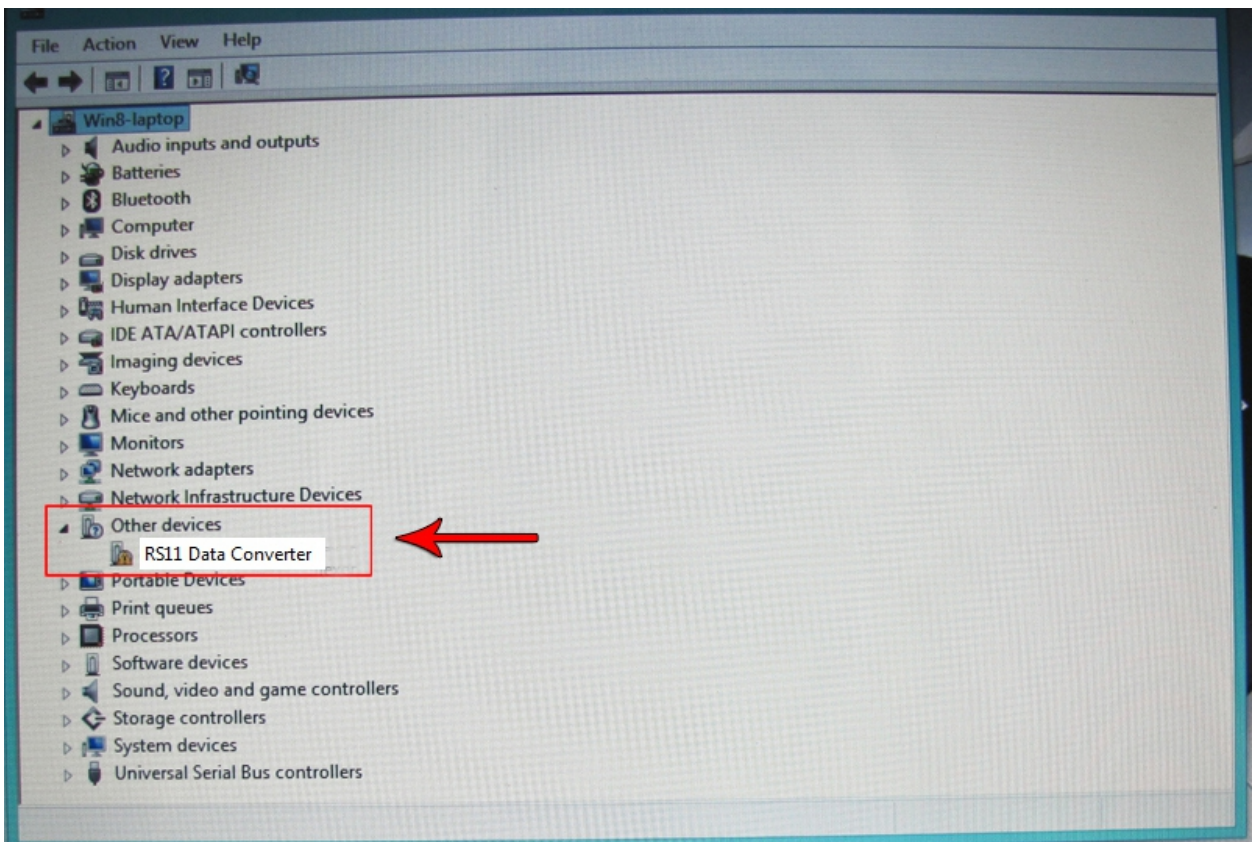


A. **Windows XP/7.** Click on Start menu. Right-click on “Computer”. Select “Properties”. When window opens, click on “Device Manager”.

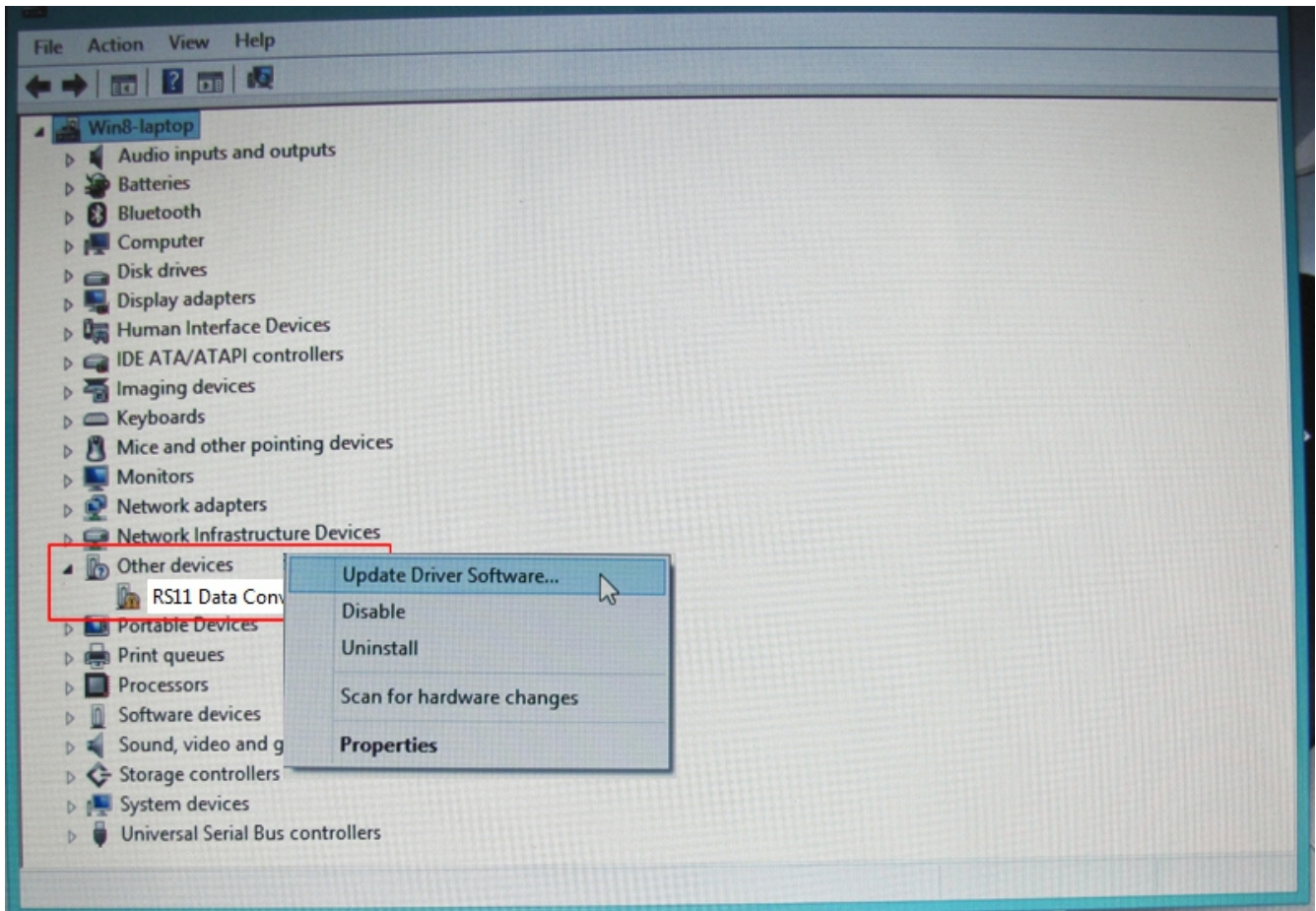


B. **Windows 8/8.1.** Move mouse to lower left corner. On windows symbol, right click. When menu appears, click on “Device Manager”.

2. With the device manager open, find the uninstalled driver. In this case, the RS11 was not installed correctly. Most likely, it will be located in the “**Other Devices**” group, shown below.



3. Right-click on the item listed under “Other devices”. When menu appears, choose “Update Driver Software...”.



4. When window appears, click on “Browse my computer for driver software”.

How do you want to search for driver software?

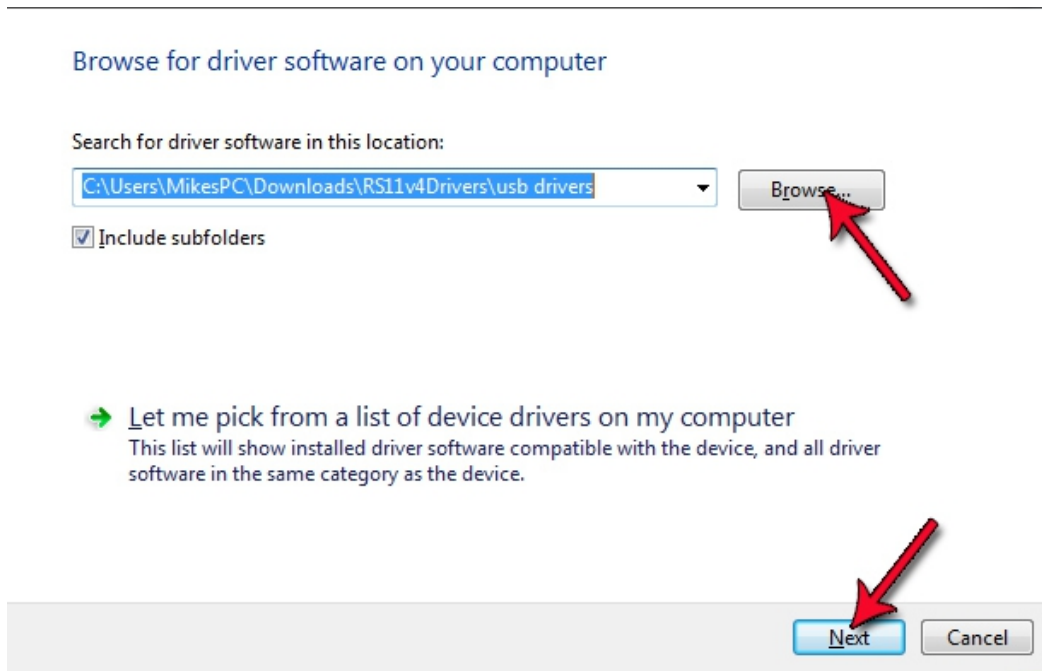
➔ Search automatically for updated driver software
Windows will search your computer and the Internet for the latest driver software for your device, unless you've disabled this feature in your device installation settings.

➔ Browse my computer for driver software
Locate and install driver software manually.

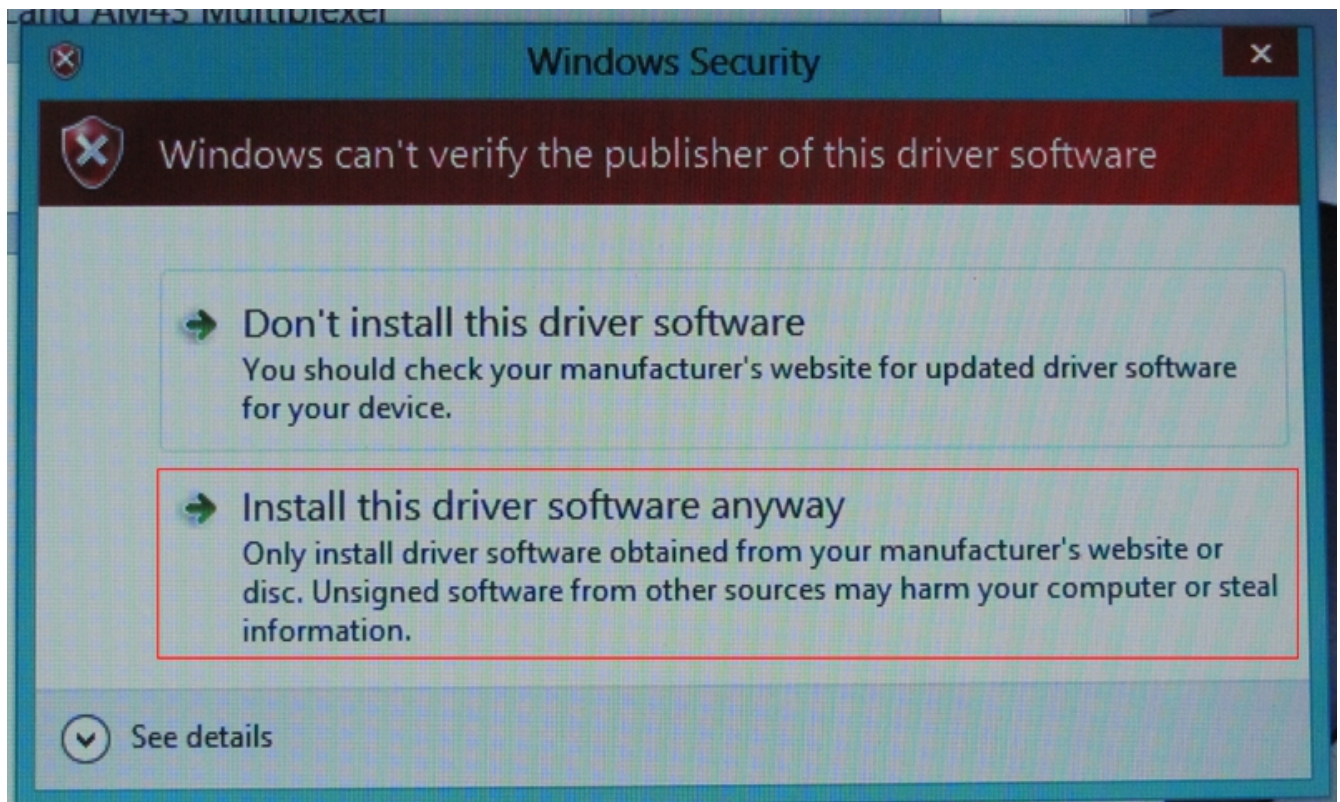


Cancel

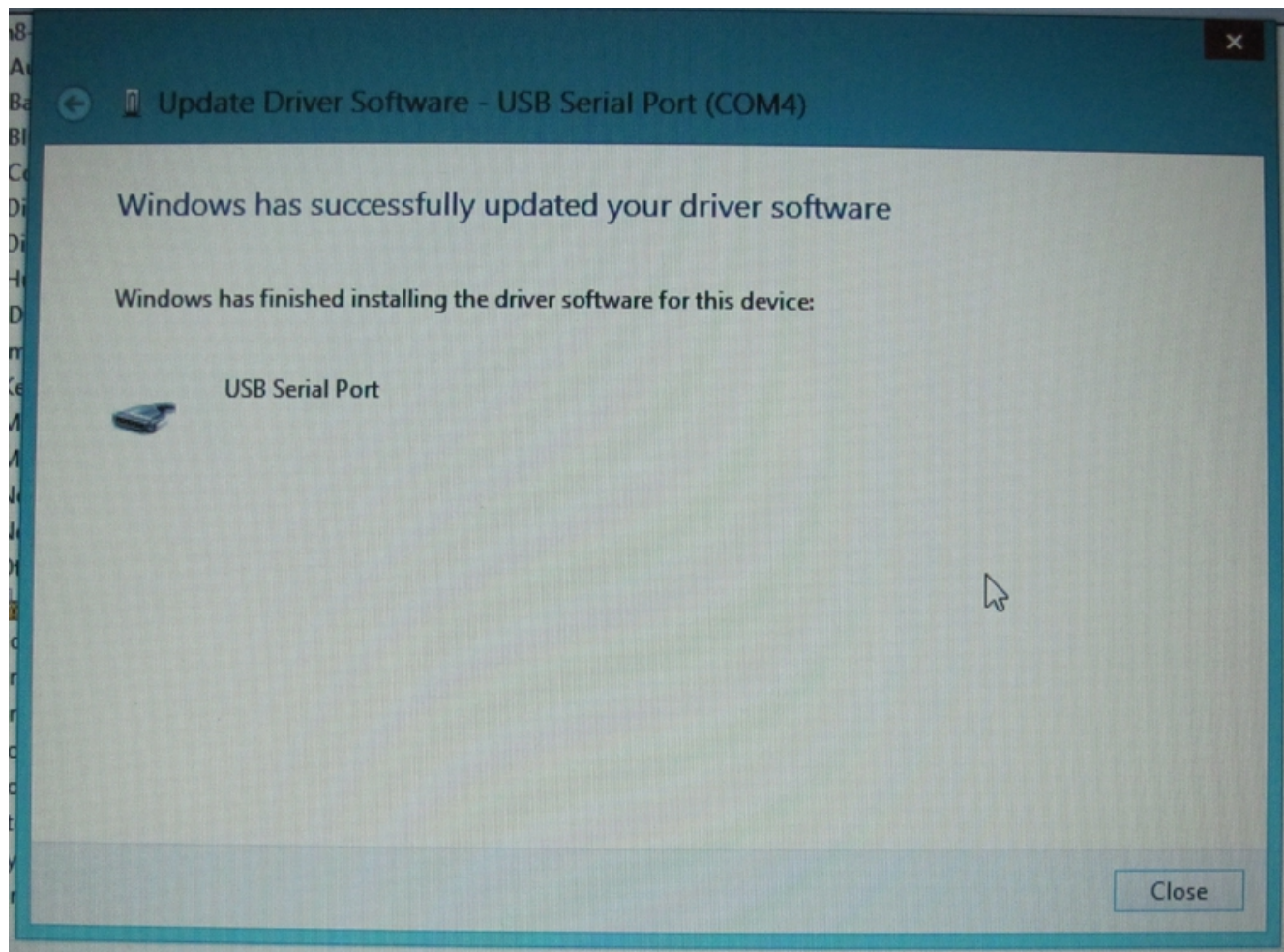
5. When the next window appears, you will need to **Browse** to the directory where your drivers are located. Click Next to continue. *Note: Make sure, if the file was downloaded from the website, that it has been unzipped or extracted.*



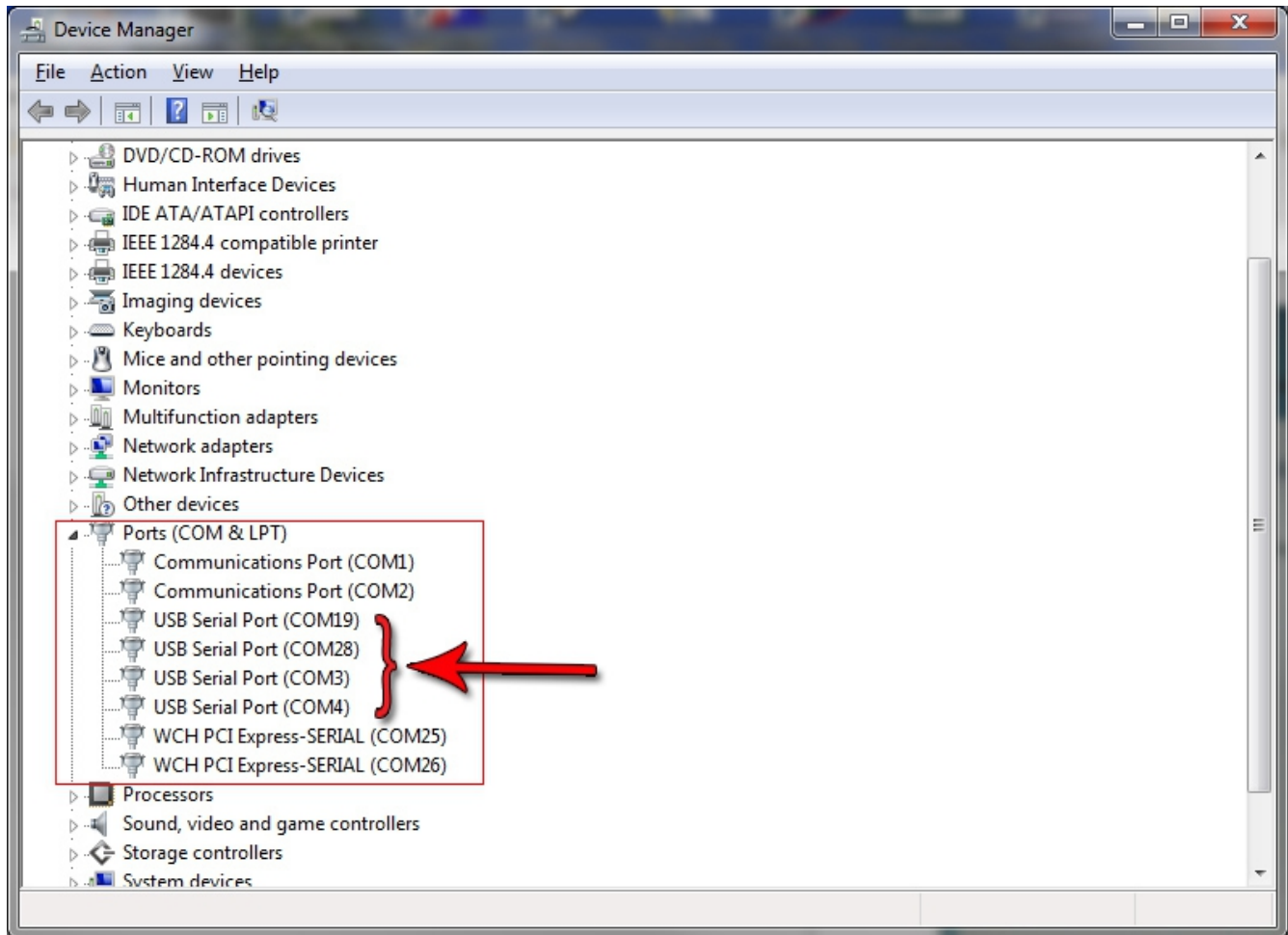
6. After the computer starts the driver installation process, the following Windows Security dialog may pop up with a “Windows can't verify publisher of this driver software” warning. Choose “Install this driver anyway”.



7. When operation is successful, you will see the following dialog pop up. This dialog will tell you the COMport that was assigned to your RS11 in the upper blue area.



8. To verify connection was successful, you can check the Device Manager. Under the Ports heading, you should see the NoLand devices COMport listed. (see below)



9. Another method of checking you were successful is to use a terminal program or software utility for installed device, connected to this assigned COMport. When connected, if you click on the Query button, you should see the setup of the device connected. Below in a sample photo of a properly connected RS11 with RS11 Setup Utility. **Note:** This does not apply to **HR12**. The HR12 does not have a query option. However you should still see data scrolling from the HR12.

RS11 Setup Utility v4.41

File Disconnect Config Help

Calibration Utility Viewing Utility

Current Source

A1: On Off
 A2: On Off
 A3: On Off
 A4: On Off

Instance
 Port: 0
 Stbd: 1

Engine Hours Reset
 Port: 00000
 Stbd: 00000

```

SERRPM,E,0,0000,,A
SERRPM,E,1,0000,,A
SPNOLA,00.31,08.11,06.31,08.13,11.68,00.48,00000000,00045F00
SERRPM,E,0,0000,,A
SERRPM,E,1,0000,,A
SPNOLA,00.31,08.12,06.31,08.12,11.68,00.48,00000000,00045F00
SERRPM,E,0,0000,,A
SERRPM,E,1,0000,,A
SPNOLA,00.31,08.12,06.31,08.12,11.68,00.48,00000000,00045F00
SERRPM,E,0,0000,,A
SERRPM,E,1,0000,,A
SPNOLA,00.31,08.12,06.31,08.12,11.68,00.46,00000000,00045F00
SERRPM,E,0,0000,,A
SERRPM,E,1,0000,,A
SPNOLA,00.32,08.11,06.31,08.12,11.68,00.46,00000000,00045F00
SERRPM,E,0,0000,,A
SERRPM,E,1,0000,,A
SPNOLA,00.32,08.12,06.31,08.12,11.68,00.48,00000000,00045F00
SERRPM,E,0,0000,,A
SERRPM,E,1,0000,,A
  
```

Port RPM Stbd Flow Stbd RPM Port Flow

Enter PPR: 030 Enter PPG/PPL: 6840

A1 Port Stbd
 Field: Turbo Boost (P)
 Display units: psi
 Sense Volts 1: 0
 field Value 1: 0
 Sense Volts 2: 10
 field Value 2: 100
 Alarm Value: 00

A2 Port Stbd
 Field: Oil Press
 Display units: psi
 Sense Volts 1: 0
 field Value 1: 0
 Sense Volts 2: 10
 field Value 2: 100
 Alarm Value: 00

A3 Port Stbd
 Field: Trans Oil Press
 Display units: psi
 Sense Volts 1: 0
 field Value 1: 0
 Sense Volts 2: 10
 field Value 2: 100
 Alarm Value: 00

A4 Port Stbd
 Field: Cool Press
 Display units: psi
 Sense Volts 1: 0
 field Value 1: 0
 Sense Volts 2: 10
 field Value 2: 100
 Alarm Value: 00

A5 Port Stbd
 Field: Fuel Press
 Display units: psi
 Sense Volts 1: 0
 field Value 1: 0
 Sense Volts 2: 10
 field Value 2: 100
 Alarm Value: 00

A6 Port Stbd
 Field: Rudder
 Display units: degrees (°)
 Sense Volts 1: 0
 field Value 1: 0
 Sense Volts 2: 10
 field Value 2: 100
 Alarm Value: 00

COM28 P_pres_rudr.cfg Connected to RS11 (Ser#3456)