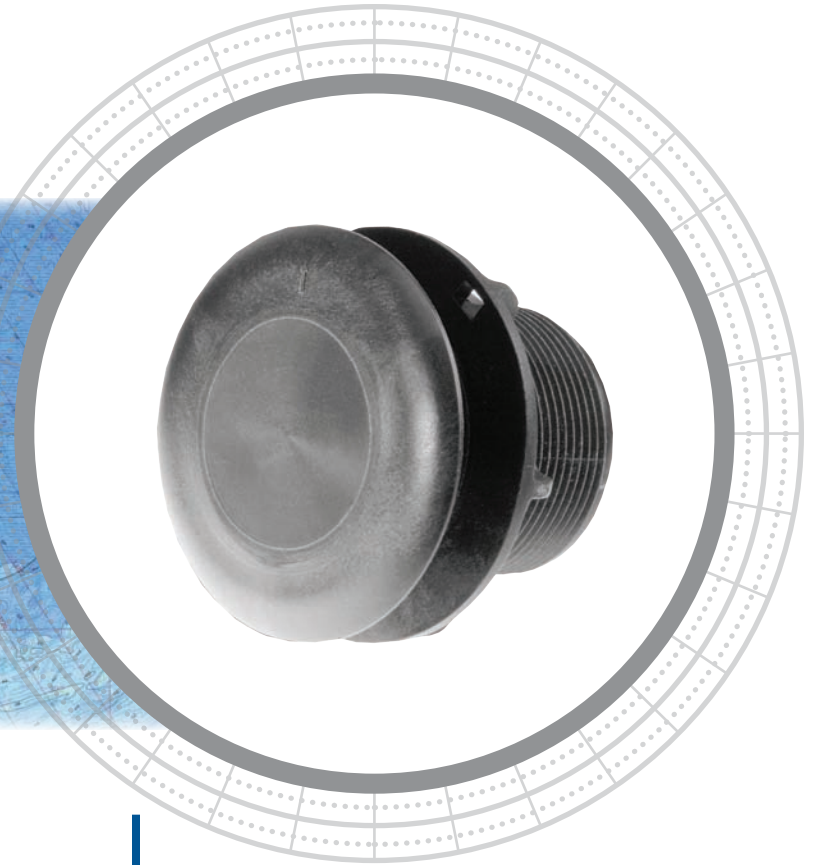


# P7 P207



## Best Performing Shorty™ Series

The plastic P7 and P207 are the best performers in our Shorty™ Series designed for boats with low headroom. Large sensitive ceramics allow deeper echosounding. The low-profile P7 model is nearly flush and minimizes drag with only 5 mm (3/16") extending outside of the hull. The P207 mounts flush, eliminating turbulence for exceptional high-speed echosounder performance.

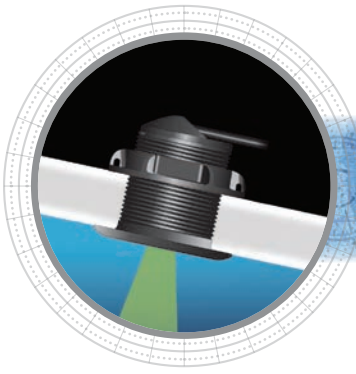
## Thru-Hull Shorty™ Series Depth Sensors

### Applications

- P7 housing—cruising sailboats and planing powerboats
- P207 housing—racing sailboats and high-speed powerboats

### Features

- Depth only or Depth and temperature
- Shorty series low-profile is designed for fiberglass and aluminum hulls with low headroom
- Total height is only 66 mm (2.61")
- Right angle cable exit offers low headroom and protection when transducer is stepped on
- Housings are ABYC H-27 compliant
- P207 housing installation requires special cutter
- Available in a plastic housing only



## Technical Information

### 200 kHz-AR / 200 kHz-BB / 235 kHz-B

Number of Elements and Configuration	○		
Beamwidth (@-3 dB)	12°	14°	11°
RMS Power (W)	375 W	250 W	350 W
TVR	164 dB	159 dB	165 dB
RVR	-185 dB	-187 dB	-185 dB
FOM	-21	-29	-21
Q	30	24	25
Impedance	375 Ω	525 Ω	350 Ω

### MAXIMUM DEPTH RANGE

200 kHz-AR	200 kHz-BB	235 kHz-B
118 m to 206 m (400' to 700')	102 m to 132 m (350' to 450')	147 m to 176 m (500' to 600')

### SPECIFICATIONS

**Weight:** 0.5 kg (1.1 lb)

**Acoustic Window:** Urethane

**Hull Deadrise:** 0° to 12° optimum and 20° maximum

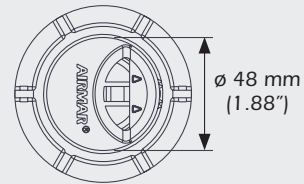
**Hole Diameter:** 51 mm (2")

**Sensor Cable Length:** 10 m (33') standard

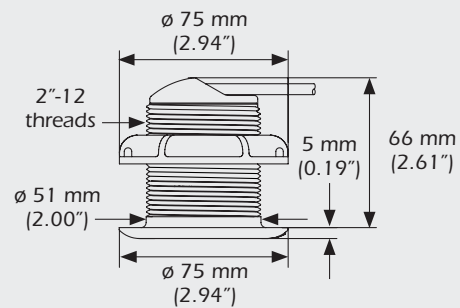
### Options

- Temperature sensor

### DIMENSIONS



#### P7—Low-Profile



#### P207—Flush-Mount

