

N295F

900026-A

1" male bolt. SS316

Fits 1" 14TPI ferrule antenna for mount installation.

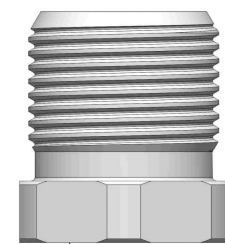
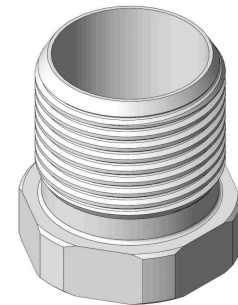
1" 14TPI male bolt for installation of ferrule antennas onto e.g. angle mounts. The superior stainless steel SS316 quality withstands the harsh maritime environment at all times.

Short description

Product group	Mount
---------------	-------

Mechanical specifications

Material	Stainless steel
Finish	SS316
Colour	SS316
Thread	1" 14TPI male / -
Rail/Mast Diameter [mm]	
Mounting	
Mounting method	Fits 1" 14TPI ferrule antenna for mount installation.
Weight [kg/lbs]	0.10 / 0.20
Size HxWxL [m]	0.03 x 0.03 x 0.03
Size HxWxL [ft]	0.10 x 0.10 x 0.10



Max 55Nm

