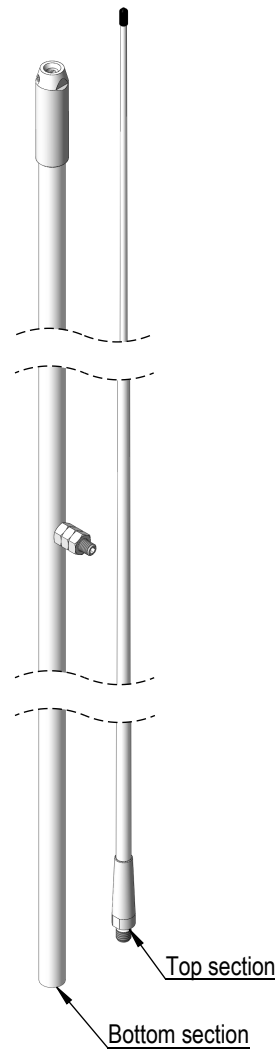
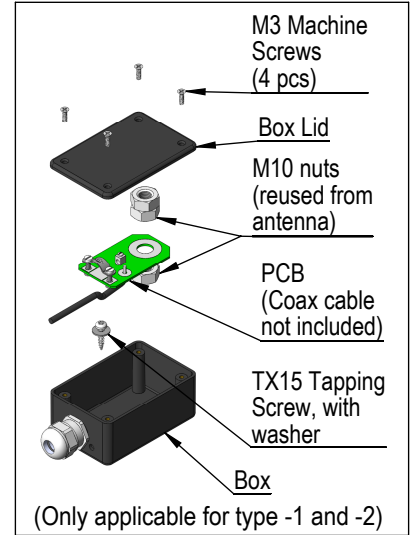
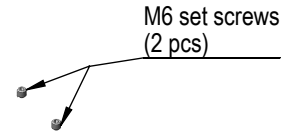


Installation Guide for 2 Section KUM400, KUM600, KUM700 Series and Mounts

457-0001.02



Package content:



AC Antennas has a complete range of mounting hardware for the KUM series.

Mounts to be ordered separately.

See datasheets for all details.

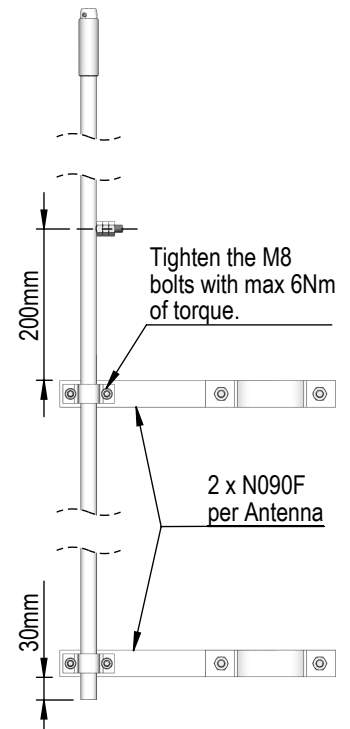
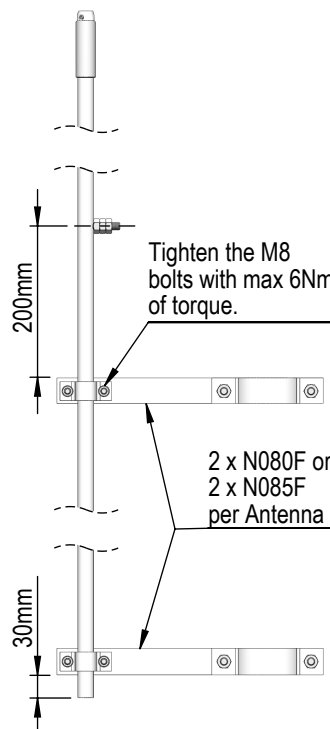
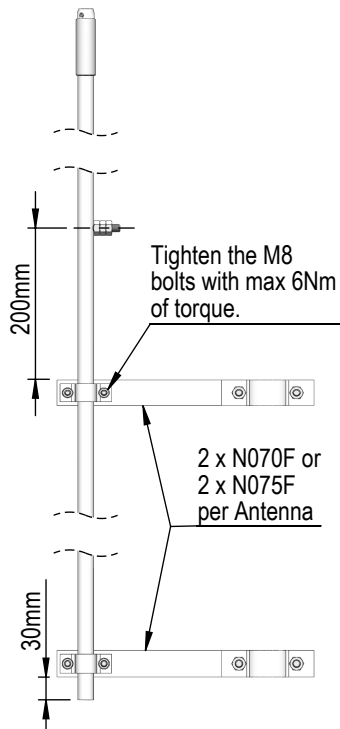
N070F or N075F Clamp Mount Ø30-50mm



N080F or N085F Clamp Mount Ø50-80mm

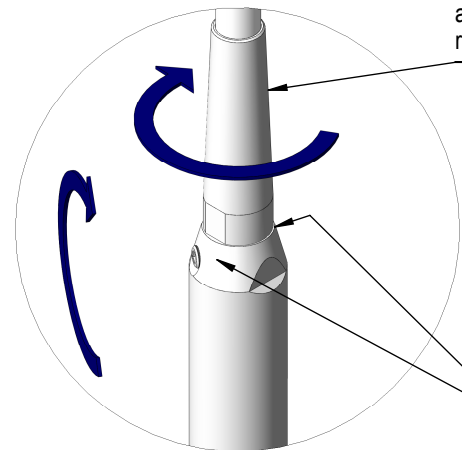
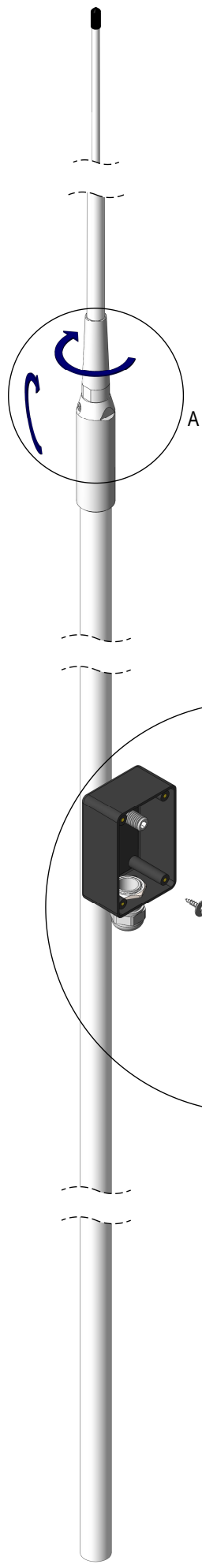


N090F Clamp Mount Ø80-100mm



Installation Guide

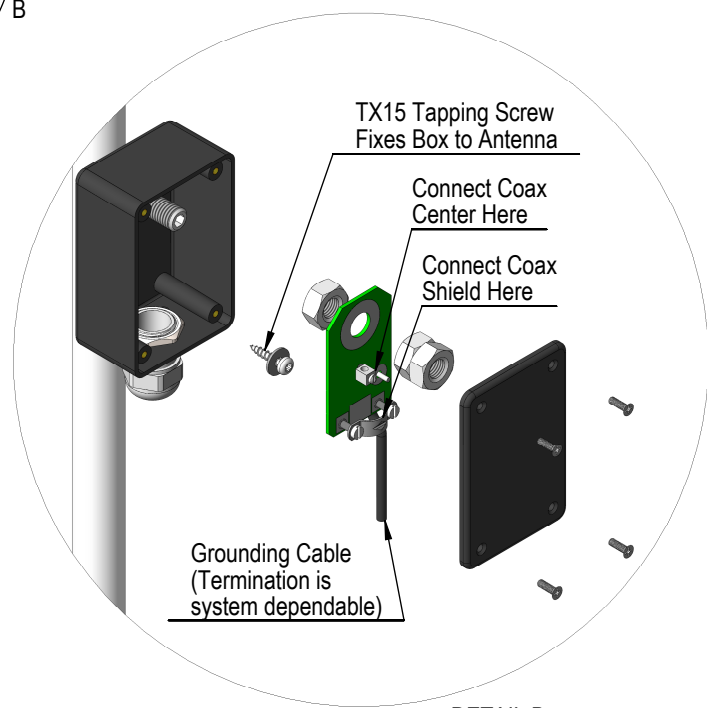
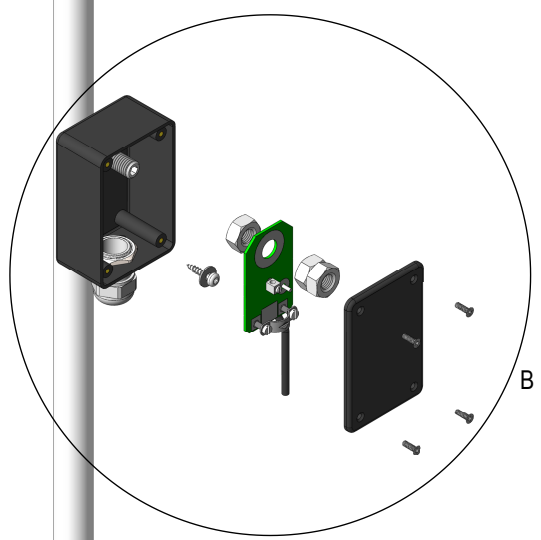
This is a guide only and does not form any contract or warranty



1: Assemble the top and bottom antenna sections with 20-25 Nm recommended torque

2: Tighten the M6 set screws (2 pcs) with 3-5Nm recommended torque. (Use loctite on the set screws for extreme cases - Not supplied)

DETAIL A
SCALE 1 : 2



TX15 Tapping Screw
Fixes Box to Antenna

Connect Coax
Center Here

Connect Coax
Shield Here

Grounding Cable
(Termination is
system dependable)

DETAIL B
SCALE 1 : 3
(Only applicable for type -1 and -2)