

CKM12

CUSTOMIZABLE KEYPAD

The CKM12 is a customizable keypad featuring laser-etched legends and dimmable LED function lights for each button. The LEDs also provide diagnostics when fault conditions are detected.

With the rugged mechanical packaging (IP69), the CKM12 can be installed inside or outside the cabin. The low-profile design offers a seamless dashboard look and it can be mounted either vertically or horizontally.

The CKM12 offers significant advantages over traditional electromechanical switches such as longer actuation cycle (1,000,000), reduced wiring harness and reduced installation time.

Product Highlights

- NMEA 2000® CAN Protocol
- IP69 Front Panel Sealing Protection
- Configurable
- Diagnostic Feedback
- Standard or Custom Laser Etched Legends
- 1,000,000+ Button Actuation Cycles
- Low Current Switching
- Tactile and Audible Feedback

Design Features

LOW PROFILE DESIGN

0.57 inch [14.48 mm] thickness (see dimensional specifications for more detail)



SEALING PROTECTION

Fully sealed IP69 front panel

LED FUNCTION LIGHTS

Colors include Amber, Green, Red or Blue.

CUSTOMIZABLE ICONS

Choose from our standard library of icons or use custom icons.



SEALING PROTECTION

Fully sealed IP69 back panel when connected

10-32 MOUNTING STUDS (2X)

Max tightening torque 30 inch lbs.

CONNECTOR

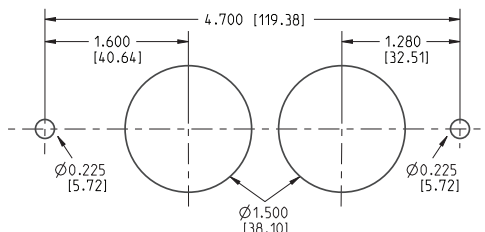
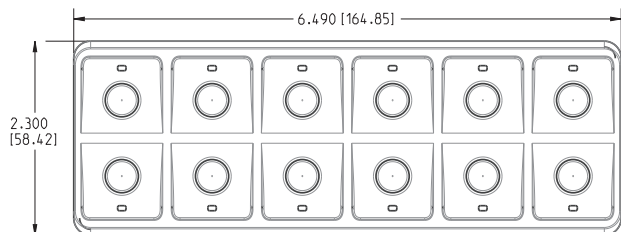
Mates to the Deutsch DT-Series Connector

PRODUCTS

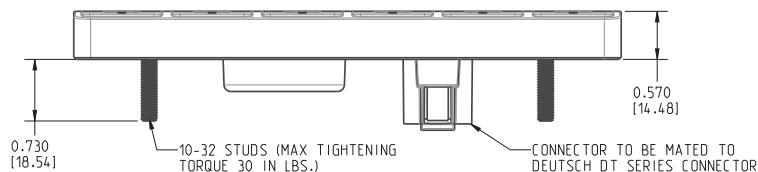
Part Number	Description
CKM12	Customizable Keypad, 12 button
A3703	CKM to NMEA 2000 Interface Adapter Cable - 1m
A3703-1	CKM to NMEA 2000 Interface Adapter Cable - 0.2m

*Manufacturer reserves the right to change product specification without prior notice. Please refer to our website for the latest details.

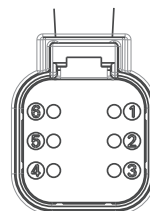
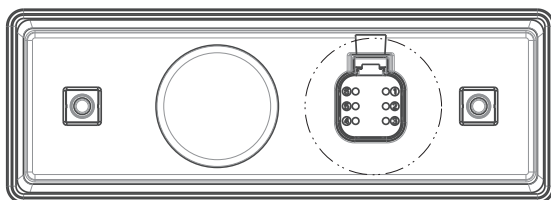
Dimensional Specifications - in. [mm]



PANEL CUTOUT +/- .020
PANEL THICKNESS TO BE .050 MIN AND .300 MAX

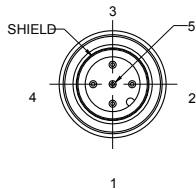
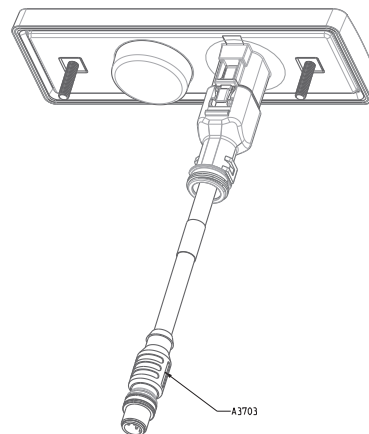
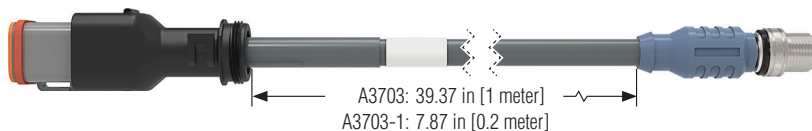


PIN OUT AS SHOWN BELOW

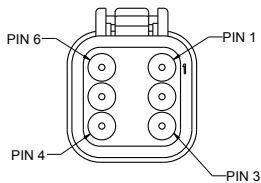


NO.	DESIGNATION
1	BATT +
2	CAN L
3	BATT -
4	IGN_ON
5	CAN H
6	CAN SHIELD

Interface Adapter Cable: Deutsch to CAN (A3703)



DETAIL A



DETAIL B

System Diagram

